

## Good Turn Out For PASMA Training

There was a good turn out for PASMA training recently as ten operatives and two managers attended the latest course. The latest PASMA training event covered the 3T variant, and the advanced guard rail variant, in the use of tower scaffolds.



Having completed this course the Rilmac delegates will now be allowed to inspect, erect and dismantle both types of scaffolding tower safely on site. They are now also equipped with the knowledge to risk assess the towers. This means that they will now be able to locate any damage on the towers and then be expected to issue a safety tag for use, or condemn the unit if damaged.

The Rilmac Group of Companies health and safety motto is "Think Safety, Work Safely" and they are passionate about safety, not just for the general public and their clients, but also for their staff. Encouraging and supporting staff in training such as the PASMA helps build a safe environment for all parties.

# Safety Minded Rilmac Scaffolder Wins DNRC Award

**A safety minded Rilmac scaffolder has won the December Safety Award at the prestigious DNRC site in Loughborough.**



*Andy "Ginge" Lewis receiving the December Safety Award*

A safety minded Rilmac scaffolder has won the December Safety Award at the prestigious DNRC site in Loughborough. Andy Lewis was on duty as the Rilmac Scaffolding Day Work Gang Leader when he was approached by a different subcontractor who asked him to remove a leading edge handrail. Aware of danger this would cause, leaving the leading edge floor in an unsafe condition, Andy (known as Ginge on site) refused.

This kept the site safe, and when the build manager heard of Andy's actions he nominated him for the monthly safety award, which he won at the end of December.

This is the third award the Rilmac team have won on site at the DNRC project during the first six months of their involvement in the construction. A pleased Des Booth, Director of Rilmac Scaffolding said "It's a great end to a great year!"

### In This Edition of The Rilmac Review:

- New Director for Rilmac Scaffolding
- Fabrication reveal latest underbase
- Double Distinction for Insulation estimator

# Rilmac Driving Towards A Greener Future

The construction and fabrication industries are not known for their environmental credentials, although this is an area the Rilmac Group takes very seriously.

The construction and fabrication industries are not known for their environmental credentials, although this is an area the Rilmac Group takes very seriously. Rilmac Insulation are already experts in improving the environment with their experience in providing insulation solutions for industry, heating and ventilation, acoustic disturbance, and cryogenic projects. Despite working in some challenging and heavily industrial fields, the Rilmac group as a whole, are making inroads in improving their internal practices while working in the most environmentally way possible in its various commercial projects.



To this end two members of senior staff have upgraded to hybrid electric cars in order to bring down their carbon footprint. As well as using these more environmentally friendly cars for work purposes the group has installed a free to use charging point at their Crofton Drive headquarters. This allows for both staff, and customers, to charge up on site before heading back out on the roads, saving time, money and the environment.

The charging points were installed as part of the Lincolnshire County Council

Sustainable Travel Grant Scheme and the Rilmac Group is committed to working with the Council on ensuring that their travel requirements will become more and more environmentally friendly. The aim being to replace other staff vehicles with hybrid models when due for replacement, encourage car sharing and support bicycle use. As industry leaders in the safe and environmentally sound removal of asbestos from many contaminated sites, and twenty years specialist insulation experience, Rilmac's green credentials are not surprising.

## Promotion Announcement – Sam McSpadden

The Rilmac Group of Companies are pleased to announce the promotion of Sam McSpadden, Rilmac Scaffolding Ltd, to Contracts Director (Southern). Sam took up his new post from 1st December 2016.

Sam McSpadden joined Rilmac Scaffolding five years ago and has progressed quickly into management positions holding both safety and business development posts during this time. Sam took up the post of Northampton Branch Operations Manager to become responsible for the Northampton depot in 2014.

His background in Scaffolding gives Sam a strong understanding of how to consistently deliver quality projects to some of the construction industry's most demanding clients, whilst his drive, energy and enthusiasm with the ability to motivate his team has led to the success of the Northampton depot.



*Rilmac Group of Companies  
Chairman Paul Walker  
congratulates Sam McSpadden*

## Rilmac Scaffolders on a Confined Space Course

Although it may seem counter intuitive for a high reaching industry, last summer found Rilmac scaffolders on a confined space course. The course, provided by Training Services in Lincoln introduced key members of the Rilmac Scaffolding team to the challenges of entering, working in, and exiting a confined space.

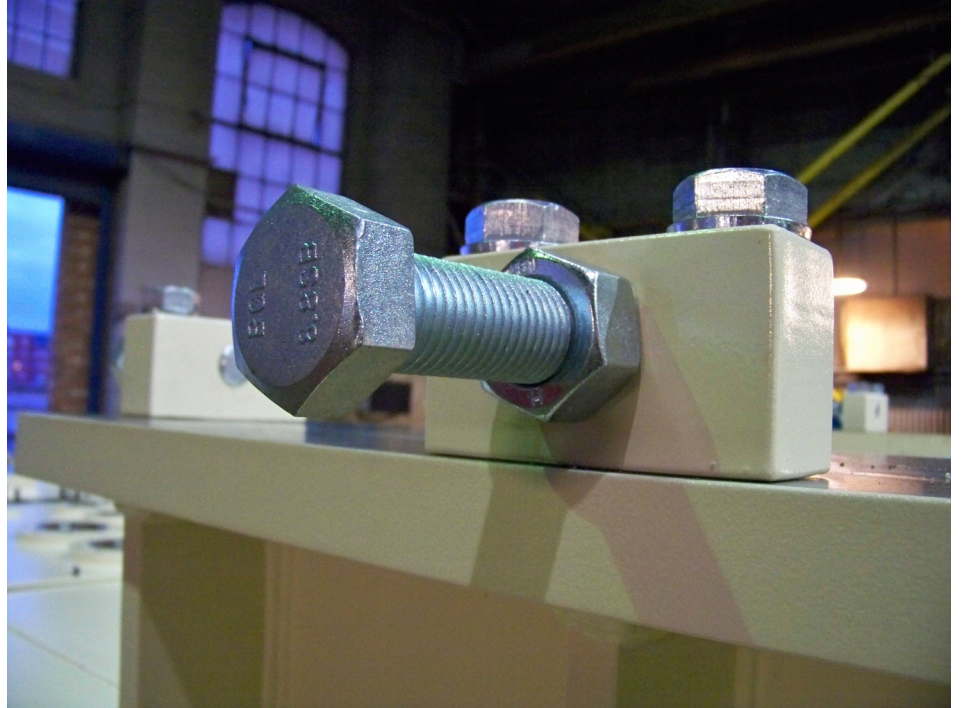


This short, single unit course earns those attending a City & Guilds qualification and is designed for all operatives who may have to enter, supervise or manage in confined and enclosed spaces. While Rilmac scaffolders are comfortable working at height this provided a new and different challenge.



Such additional training helps Rilmac Scaffolding achieve its core values of professionalism, quality of workmanship, with a "can do" approach which allows them to find innovative solutions to customers' needs.

## Rilmac Fabrication proud to share their latest underbase project



Rilmac Fabrication are proud to share the completion of their latest underbase project. The most recent unit to leave the workshop sees the completion of an important four part order.

With over twenty years' experience fabricating these important and exacting pieces, Rilmac Fabrication are seen as an expert in the field. However this doesn't mean they are any less excited when a new one leaves their Beevor Street workshop in Lincoln.

Rilmac underbases are used worldwide, mainly in the gas and oil industries, and often off shore as well as on shore.

Time to put make a start on the next batch!



## Double Diploma Distinction

The scaffolding design team at Rilmac Scaffolding has recently grown by two, with design/estimators Adie Curcio and Chris Ladlow passing their HNC in Civil Engineering and Construction from North Lincs College. Studying on a weekly day release scheme this achievement has taken them just two years. The qualification, which is a BTEC level four, will allow Adie and Chris to produce accurate scaffold design drawings with the relevant calculations alongside.

This gives Rilmac Scaffolding a greater range of knowledge and understanding in the design department, allowing them to provide fully planned estimates more quickly and with no loss of accuracy.

Both Adie and Chris started their careers at Rilmac working on the 'front line' building scaffolding projects on site before moving on to roles in the estimation and design department. Adie and Chris passed their course with distinction, bringing the recent tally of Rilmac Group employees passing diplomas at this grade to four.

Congratulations Adie and Chris!



*Chris Ladlow receives his certificate from Rilmac Chairman Paul Walker.*



*Adie Curcio receiving his certificate from Paul Walker.*

## SAM QUALIFIES WITH DOUBLE DISTINCTION

Rilmac Insulation estimator, Sam Cowles, passed his BTEC in Construction and the Built Environment (QCF) after two year's hard work at Lincoln College. Having passed with a Double Grade Distinction Merit, Sam believes his new qualification will help him to progress. Sam started at Rilmac four years ago. He works in the busy estimating department and is learning the ropes from the ground up. When he's not hard at work at Rilmac Insulation, or studying, Sam is out winning on the rugby pitches of Lincolnshire!



*Sam receives his certificate from Chief Estimator Paul Chaplain*

## A Sign Of Long Term Support

Viewers of the recent television highlights of Lincoln City's progress in the FA Cup will have been able to glimpse a sign of long term support for The Imps from the Rilmac Group. Rilmac have been supporting Lincoln City, in one form or another, for over three decades now. This has included, for many years, a pitch side board, behind the goal, at the IMPS stand of Sincil Bank. Recently a new board has been designed and installed, replacing the previous which was getting a little tatty. The new version arrived just in time for the BBC cameras as Lincoln City beat Altrincham in the first round of the FA Cup. Subsequently we have been proud to see it supporting The Imps in matches against Oldham, Ipswich and Brighton.



*The new Rilmac board behind the goal at Sincil Bank*

# RILMAC

*Group of Companies*

**in** /company/rilmac-group

**Twitter** @RilmacGroup

**f** /RilmacGroup

**01522 531711**

enquiries@rilmac.co.uk

www.rilmac.co.uk

## REMEMBER

# "Think Safety, Work Safely"