



*Company:*  
Peter Brotherhood Ltd

*Type of Project:*  
Turbine Insulation

*Location:*  
Peterborough, UK

*Duration:*  
10 days (working)

### **Rilmac Insulation Limited**

Crofton Drive, Allenby Road  
Industrial Estate, Lincoln,  
Lincolnshire LN3 4NJ

B. W. House, 1 Lea Road,  
Waltham Abbey, EN9 1 AS

Heritage Exchange,  
Wellington Mills,  
Plover Road, Lindley,  
Huddersfield, HD3 3HR

T: +44 (0)800 612 9002  
E: [enquiries@rilmac.co.uk](mailto:enquiries@rilmac.co.uk)  
W: [rilmac.co.uk/insulation](http://rilmac.co.uk/insulation)

[in /company/rilmac-group](https://www.linkedin.com/company/rilmac-group)

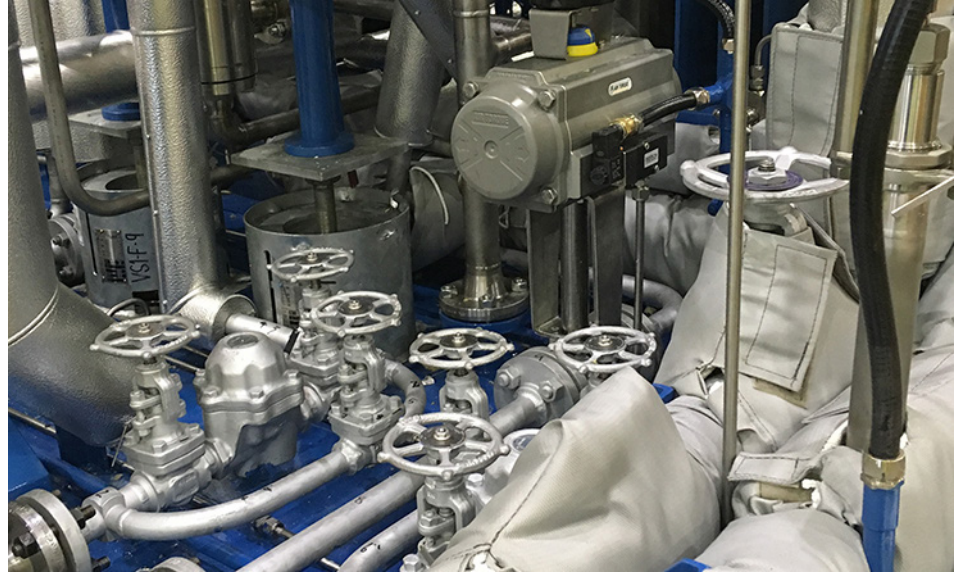
[@RilmacGroup](https://twitter.com/RilmacGroup)

[f /Rilmac-Group](https://www.facebook.com/Rilmac-Group)

# **RILMAC**

*Insulation*

## **TURBINE INSULATION CASE STUDY**



Installation of foil faced mineral wool insulation protected with stucco aluminium cladding to the Oil and Steam pipework on the turbine. Areas where it was not achievable to use previously stated methods such as valves and flanges, removable jackets were fitted and manufactured from a grey silicone cloth with a mineral wool insulation filling secured with Velcro and drawstrings.

### *Challenges faced:*

Due to the complex nature of the turbine itself with such tight working spaces and many bends, it made the job difficult to say the least. During the project, we also faced challenges with the Client introducing and installing various new components or brackets which were not on the original drawing meaning we had to change our working methods. But in true Rilmac style we completed the job to a very high standard and left another happy client.

