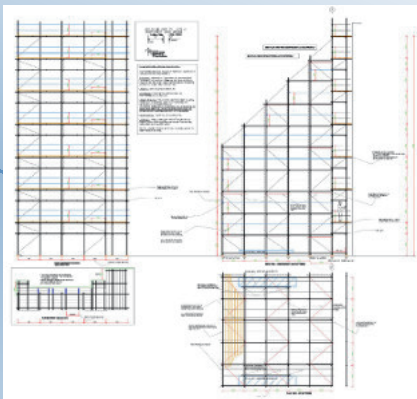




# RILMAC

Scaffolding

## NIXON COURT STUDENT ACCOMODATION CASE STUDY



### Rilmac Scaffolding

Greetwell Road, Lincoln,  
Lincolnshire LN3 4NH

T: +44 (0)1522 545680  
E: enquiries@rilmac.co.uk  
W: rilmac.co.uk/scaffolding

Unit 3, The Scorpion Centre,  
19-21 Hartburn Close,  
Crow Lane Industrial Estate,  
Northamptonshire NN3 9UE

T: +44 (0)1604 659788  
E: enquiries@rilmac.co.uk  
W: rilmac.co.uk/scaffolding

[in](#) /company/rilmac-group

[@RilmacGroup](#)

[/Rilmac-Group](#)

### Student Accommodation

*Project:* Nixon Court Student Accommodation

*Client:* Willmott Dixon

*Location:* Leicester

*Value:* Total project £20K

*Requirement:* 2KNm<sup>2</sup> across 22m high, access independent, free standing scaffold

*Extra Challenge:*

Could not be physically tied to the building

*Solution:* Buttress scaffold